

WELCOME TO OUR Bump Report

COLLETTE'S QUESTION

WHAT OTHER COUNTRY CELEBRATES THEIR OWN LIBERATION ON THE 4TH OF JULY?

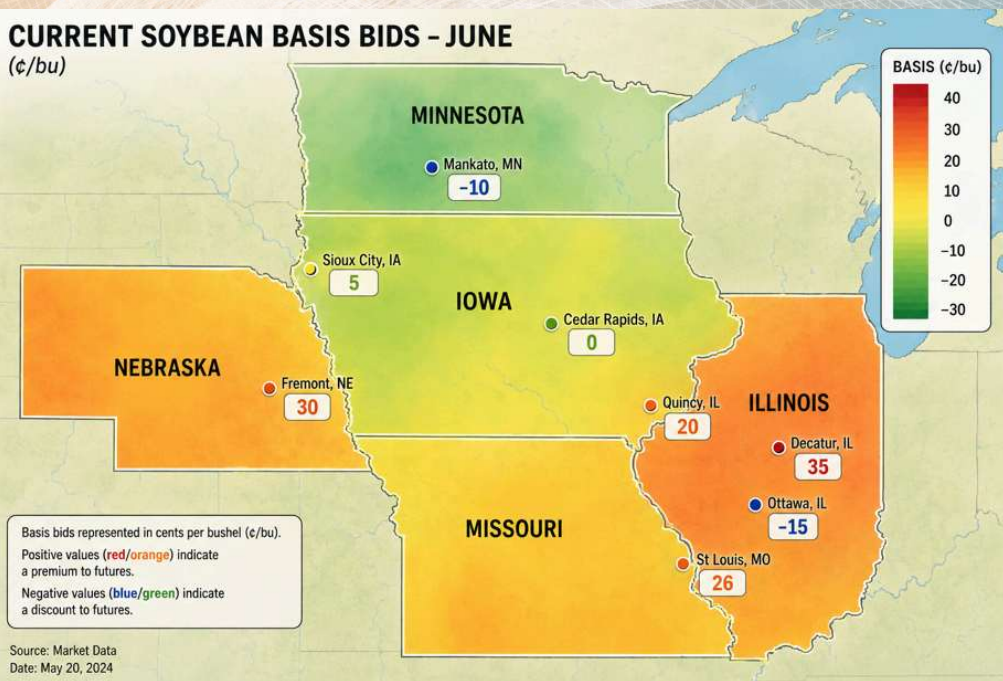
Market Update

Current grain markets have found support met with demand currently keeping the market trading in a tight range with little movement in daily ranges. Bids continue to improve in the Eastern corn belt for Corn and Soybeans as demand has increased at the gulf and processor margins remain robust. Crop conditions vary across the states as too much rain has effected Southern/Eastern Iowa through the North Central Eastern Corn belt. Nitrogen deficiencies are becoming very evident in many saturated areas.

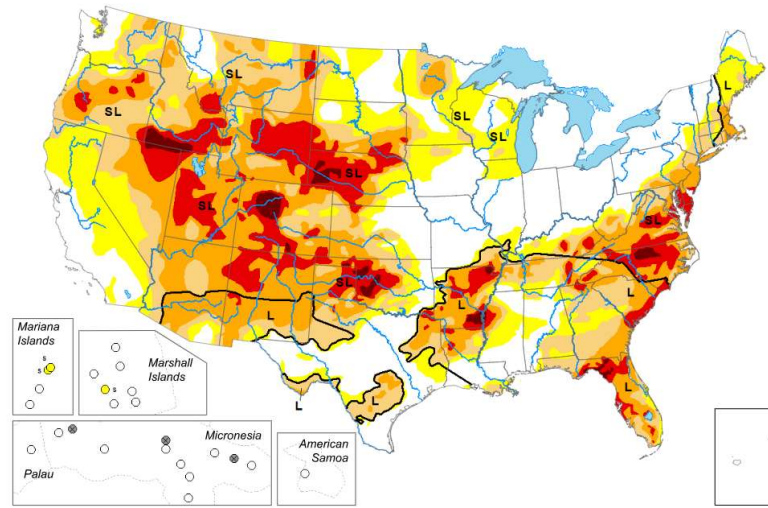
Corn	Today (change)	LY	5 YR
CR, IA	-2(-2)	-1	28
Decatur	18(+3)	5	25
St Louis	29(+10)	22	36
Soybean	Today	LY	5 YR
CR, IA	0(-20)	-15	12
Decatur	35(+10)	20	39
St Louis	26(+9)	19	46

CURRENT SOYBEAN BASIS BIDS - JUNE

(¢/bu)



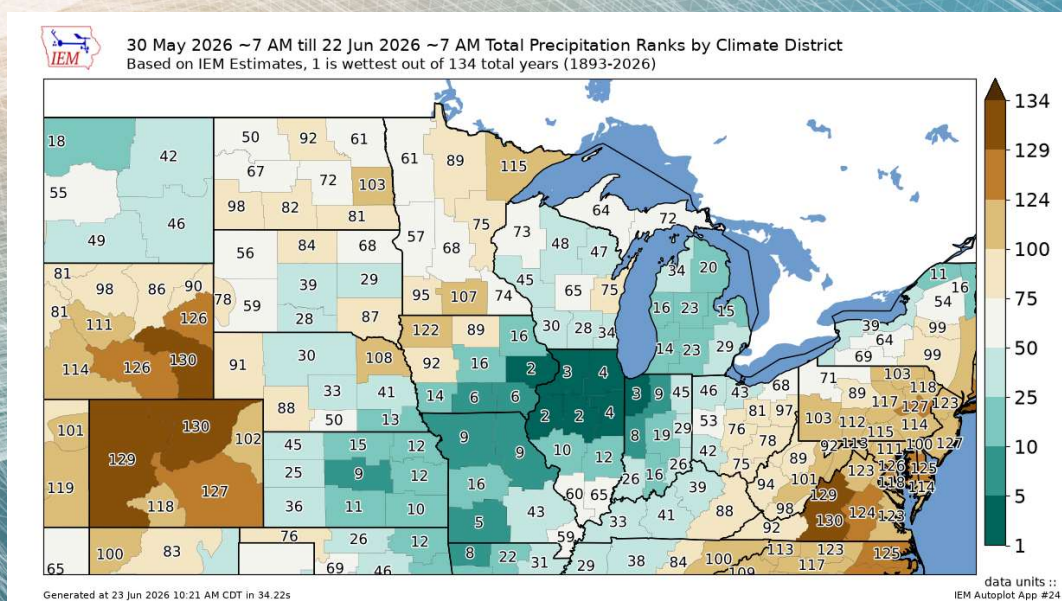
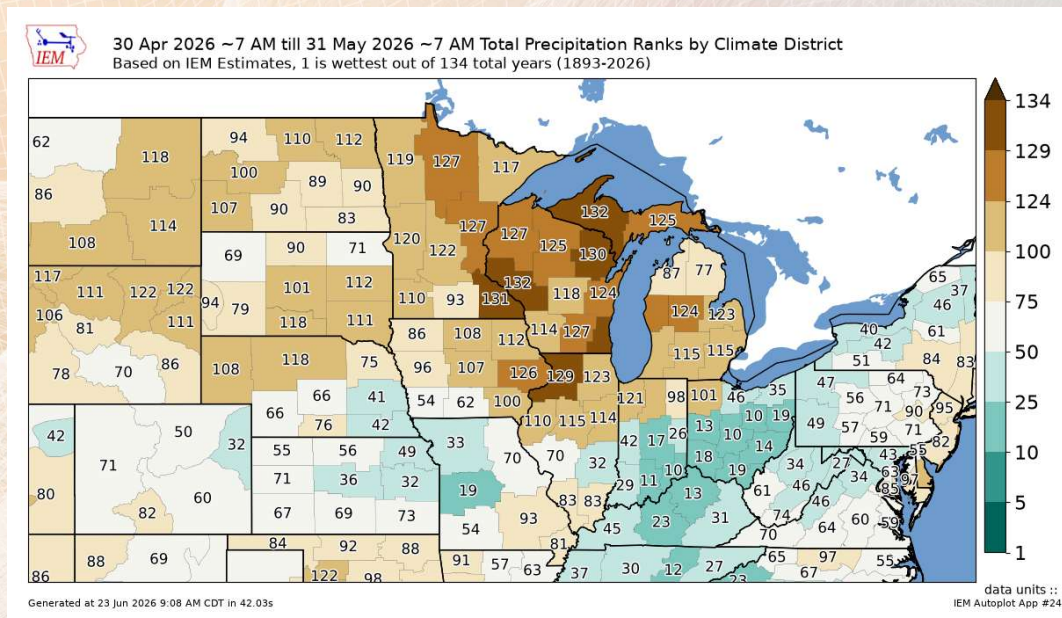
SOYBEAN BASIS CONTINUES TO BE VERY STRONG AT CRUSH PLANTS ACROSS THE US. CREATING HOTSPOTS IN LARGE CRUSHING AREAS, WHILE RIVER BIDS HAVE IMPROVED THEY ARE WEAK COMPARED TO THE 5 YR AVERAGE.



The recent wet weather has eliminated the drought stress in the eastern cornbelt while majority of the west remains very dry. The recent forecast update shows a much drier outlook for much of the cornbelt.

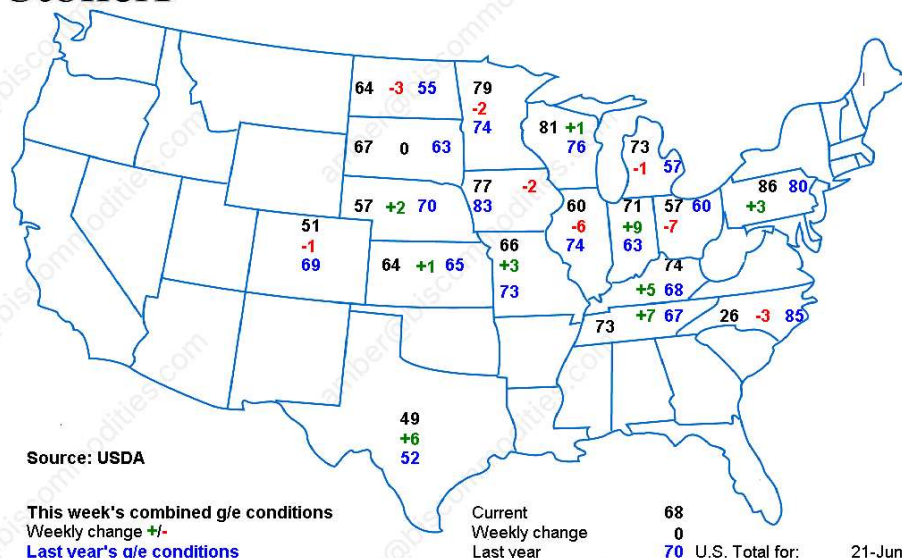
MIDWEST PRECIPITATION RANKS

What a difference a month makes. Top map shows precip rank for the month of May compared to the month of June below. One of the wettest June's on record for Eastern Iowa and Northern Illinois. How will this effect Nitrogen availability?



StoneX®

U.S. Corn Conditions



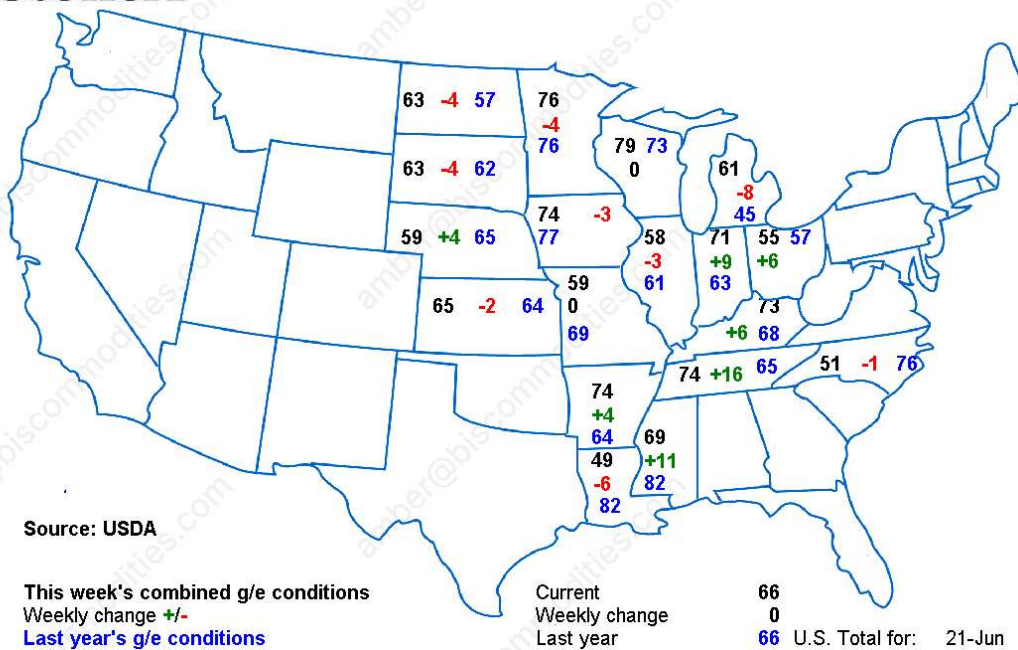
ANSWER
RWANDA

THE RECENT CHANGE IN MOISTURE IS SHOWING A DECREASE IN CROP CONDITION SCORES IN IOWA AND ILLINOIS, AS OVERALL CONDITION SCORES REMAIN ABOVE THE AVERAGE INDEX.

Drier weather and heat are needed in most of eastern corn belt to help ratings improve for soybeans

StoneX®

U.S. Soybean Conditions



Screwworm cases in the US up to 16 with all active cases remaining in Texas.

Upcoming Reports

CROP PRODUCTION & QUARTERLY STOCKS JUNE 30

This material has been prepared by a sales or trading employee or agent of BIS Commodities and is, or is in the nature of, a solicitation. This material is not a research report prepared by BIS Commodities Research Department. By accepting this communication, you agree that you are an experienced user of the futures markets, capable of making independent trading decisions, and agree that you are not, and will not, rely solely on this communication in making trading decisions. DISTRIBUTION IN SOME JURISDICTIONS MAY BE PROHIBITED OR RESTRICTED BY LAW. PERSONS IN POSSESSION OF THIS COMMUNICATION INDIRECTLY SHOULD INFORM THEMSELVES ABOUT AND OBSERVE ANY SUCH PROHIBITION OR RESTRICTIONS. TO THE EXTENT THAT YOU HAVE RECEIVED THIS COMMUNICATION INDIRECTLY AND SOLICITATIONS ARE PROHIBITED IN YOUR JURISDICTION WITHOUT REGISTRATION, THE MARKET COMMENTARY IN THIS COMMUNICATION SHOULD NOT BE CONSIDERED A SOLICITATION.

WWW.BISCOMMODITIES.COM